

# Thailand 16A

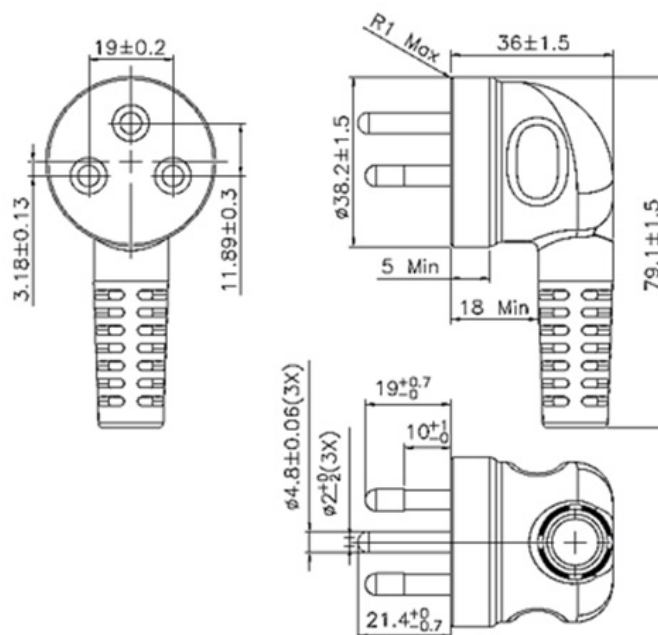
## EV Charging Cable and Plug with Dual Thermistors



Volex Thailand 16A EV charging grid cables and plugs are used in mode 2 AC charging cable assemblies to charge battery-powered (BEV) or plug-in hybrid electric vehicles (PHEV).

EV charging grid cables can be used with any domestic or household socket outlet and connect to the In-Cable Control and Protection Device (IC-CPD), allowing drivers to safely charge their electric vehicle without the need for a dedicated circuit or EV charging station.

All Volex electric vehicle charging grid cables and plugs meet industry standards, regulatory, and country-specific compliance requirements, ensuring compatibility with various regional grid plug interfaces.



### TECHNICAL INFORMATION

Cat. No.	VET116TH2A3R
Description	Angled 10A Plug
Standard	TIS 166
Max. Rating	10A 250V
IP Rating (Match with wall socket per safety standard)	IP 20
IP Rating of Plug	IP 67
Cable Type	H07BZ5 3×2.5mm + 3×0.5mm

Contact us at [sales@volex.com](mailto:sales@volex.com)  
for assistance in finding the right solution for your needs.