

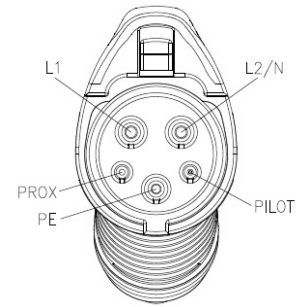
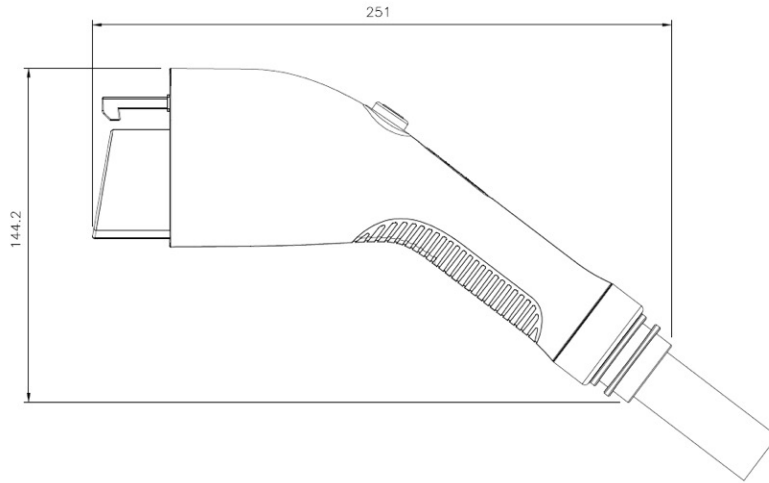
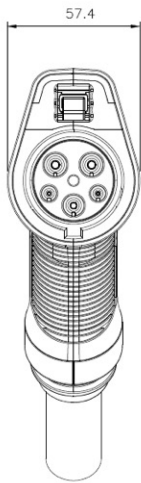
SAE J1772

AC Charging Cable

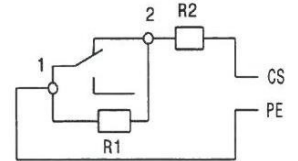


PRODUCT DEFINITION				
Charging Standard	J1772			
Standards / Regulations	UL 2251, CSA C22.2 NO. 282 SAE J1772			
Approval	UR / cUR			
DIMENSIONS: CHARGING CONNECTOR				
Width	57.4 mm			
Height	144.2 mm			
Depth	251 mm			
Cable Length	On Request			
AMBIENT CONDITIONS				
Ambient Temperature (Operation)	-30°C to +50°C			
Ambient Temperature (Storage / Transport)	-40°C to +80°C			
Max. Altitude	5000 m (above sea level)			
Degree of Protection (Unmated)	IP67 / 3R and above			
ELECTRICAL PROPERTIES				
Number of Phases	1			
Rated Voltage for Power Contacts	240V AC			
Rated Current for Power Contacts	16A	32A / 40A	48A	80A
Maximum Charging Power	3.84 kW	7.68 kW	11.52 kW	19.2 kW
Number of Power Contacts	3 (L1, N, PE)			
Rated Voltage for Signal Contacts	30V AC			
Rated Current for Signal Contacts	2A			
Number of Signal Contacts	2 (CP, PP)			
Temperature Sensor	Optional (NTC or PT1000)			
Note on the Connection Method	Crimp Termination (cannot be disconnected)			
Resistor Coding (between PE and CS)	480 Ω (lever operated) 150 Ω (lever not operated)			
MECHANICAL PROPERTIES				
Mating Cycles	> 10,000			
Insertion Force	< 75 N			
Withdrawal	< 75 N			

SAE J1772 MECHANICAL DRAWING



R2: 150 Ohm



MATERIAL

Material Housing / Handle Area	Plastic
Material Mating Face	Plastic
Material Protective Cap	Soft Plastic
Flammability Rating	V0
Material Contacts	Cu-Alloy
Plating	Silver Plating

DESIGN

Housing / Handle Area Colour	Black
Mating Face / Locking Lever Colour	Black
Protective Cap Colour	Black
Housing with Customer Logo	On Request

CABLE

AMPERAGE	APPROVAL	CABLE STRUCTURE	CABLE O.D.	PHASE
16A	UL Listed	EVC 3 x 14AWG + 1 x 22AWG	10.5 mm	1 Phase
32A / 40A	UL Recognised	EVC 3 x 10 AWG + 1 x 22AWG	12.0 mm	
	UL Listed	EVE 3 x 10AWG + 1 x 22AWG	15.8 mm	
48A	UL Recognised	EVC 2 x 8AWG + 1 x 10AWG + 1 x 22AWG	14.5 mm	
	UL Listed	EVE 2 x 8AWG + 1 x 10AWG + 1 x 18AWG	22.5 mm	
80A	UL Recognised	EVC 2 x 6AWG + 1 x 8AWG + 4 x 22AWG	19.1 mm	
	UL Listed	EVE 2 x 6AWG + 1 x 8AWG + 1 x 18AWG	24.0 mm	

** Set Approval is required for UL Recognised

CABLE RESISTANCE AT 20°C

6AWG	8AWG	10AWG	14AWG	18AWG	22AWG
≤ 1.40 Ω/km	≤ 2.23 Ω/km	≤ 3.51 Ω/km	≤ 8.88 Ω/km	≤ 22.4 Ω/km	≤ 56.8 Ω/km

Cable Standard	UL 62
Type of Conductor	Straight (or more type on request)
Outer Sheath Material	TPE Compound
Outer Sheath Colour	On Request

ENVIRONMENTAL PRODUCT COMPLIANCE

REACH SVHC	Compliant
China RoHS	Compliant
EU RoHS	Compliant

Contact us at sales@volex.com
for assistance in finding the right solution for your needs.