

NEMA 6-20P

Straight and Angled Plugs



Volex offers two different NEMA 6-20P plugs in straight and angled versions. These products have a maximum rating of 20A at 250V and are all designed and manufactured with UL/c-UL and CSA safety approvals to meet the following standards:

UL 498

UL 817

CSA Std. C22.2



NEMA 6-20P STRAIGHT AND ANGLED PLUGS

Standard		UL 498, UL 817, CSA Std. C22.2	
Max. Rating		20A, 250V	
Safety Approval		UL/c-UL, CSA	
Catalogue No.	Cable Type	Size	Matching Connector
VS207A	SJT	3 x AWG 12	VAC19A, VAC19LA, VSC19
	SJT	3 x AWG 14	V1625LA, V1625BA, V1625BS, VAC15A, VAC19A, VAC19LA, VSC19
	SPT-3	3 x AWG 12	Free-end or Fast-on and Ring Terminals
	SPT-3	3 x AWG 14	
	NISPT-3	3 x AWG 12	
	NISPT-3	3 x AWG 14	
PS620	SJT	3 x AWG 12	VAC19A, VAC19LA, VSC19
	SJT	3 x AWG 14	V1625LA, V1625BA, V1625BS, VAC15A, VAC19A, VAC19LA, VSC19
	SJT	3 x AWG 16	VNBC13S, V1625A, V1625LA, V1625BA, VAC15A, VAC19A, VAC19LA, VSC19
	SJT	3 x AWG 18	VNBC13S, V1625A, V1625LA, VSC19
	SJTW	3 x AWG 12	VSC19

NEMA 6-20P PLUGS TECHNICAL INFORMATION

Volex VS207A is an angled NEMA 6-20P plug that is typically used with medium to heavy appliances.

Safety approvals are available covering three different cable types as follows:

SJT

SPT-3

NISPT-3

Various conductor sizes include AWG 12 and AWG 14 both with 3 conductors.

It can be matched with free-end or fast-on and ring terminals, or various IEC connectors as shown in the table below. Volex PS620 is a straight NEMA 6-20P plug that is typically used with medium to heavy appliances. Safety approvals cover two different cable types available:

SJT

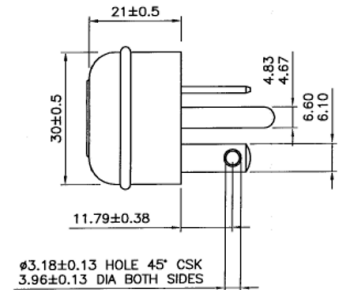
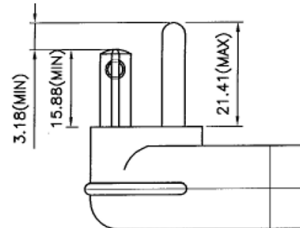
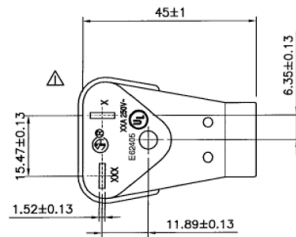
SJTW

Various conductor sizes include AWG 12, AWG 14, AWG 16 and AWG 18 with all having 3 conductors. Both can be matched with free-end or fast-on and ring terminals or various IEC connectors as shown in the table below.

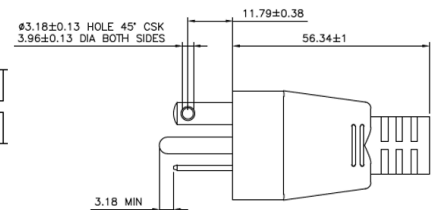
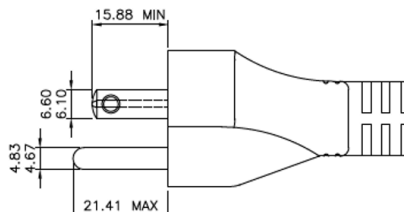
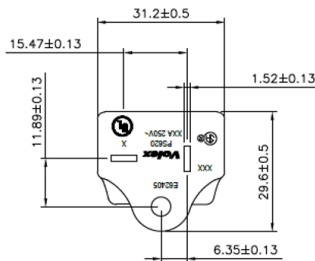
Volex NEMA 6-20P plugs are mostly used in North America.
See photos, drawings, and chart below for details.

NEMA 6-20P PLUGS TECHNICAL DRAWINGS

VS207A



PS620



Contact us at sales@volex.com
for assistance in finding the right solution for your needs.